

INNOVATION GALLERY ■ JANUARY 2014

Transforming lives through extraordinary learning environments

Setting the stage for unique opportunities that nurture the imagination, curiosity and creativity supporting science, technology, engineering, arts and mathematics (STEAM) education.

In the Studios:

Inventor

Build big, small, wide or long using as many Keva Planks as you can imagine!

Doodler

Sketch, doodle, erase, crumple, fold, crease, tear, glue, design to create original works of art.

Designer

Explore the luminous qualities and properties of light and color.

Imaginer

Experience a rotating menu of playful and inventive activities.



FORT WORTH MUSEUM
SCIENCE AND HISTORY

The Fort Worth Museum of Science and History, founded in 1941, is accredited by the American Association of Museums.

817-255-9300
www.fortworthmuseum.org



Smithsonian Institution
Affiliations Program

RESEARCH AND LEARNING CENTER

at the Fort Worth Museum of Science and History

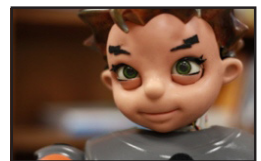
The Research and Learning Center is a shared vision of the Fort Worth Museum of Science and History and the College of Education and Health Professions at the University of Texas at Arlington. The RLC's mission is to support and enhance lifelong learning at the Fort Worth Museum of Science and History through interactive collaborations with research scientists. Museum guests can learn from researchers and experience the scientific discovery process as they participate in active research studies.

The Research Learning Center, located inside Imaginer Studio, will be open Saturdays from 10 am until 4 pm for guest interaction with research scientists. For further information, contact Debbie Cockerham, Managing Director, at dcockerham@fwmsch.org.

January 11, 2014

UT Arlington Electrical Engineering Professor Dr. Dan Popa and his Next Generation Group conduct research on new and improved multi scale robots that are increasingly small, integrated, and networked. Dr. Popa and his team work to design and produce robots that are inexpensive, user-friendly, and interactive.

Zeno, a two-foot tall, child-like robot, was built to function as a human-robot interactive system with the goal of assisting with the diagnoses of early stage Autism Spectrum Disorder in children. Zeno is able to mimic the actions and facial expressions of individuals who stand in front of an Xbox Kinect. As the robot smiles, blinks, and waves at participants, he can both diagnose social skill needs and provide training for social skill deficits.




Learn more about Dr. Popa and Zeno at <http://www.uta.edu/ee/ngs/?p=314>.



WOW!

Drop by any day of the week to enjoy

- 11 am Collections Spotlight - Innovation Gallery
- 2 pm Science Demonstration - Innovation Gallery
- 3 pm TED lecture - Imaginer Studio



Look what's coming in February



See how much fun engineering can be!

FEBRUARY 18-22

LEARNING AND RESEARCH COLLABORATORS:



STUDIO LEARNING ENVIRONMENTS, TOPICS AND ACTIVITIES ARE DESIGNED FOR AGES 8 AND OLDER AND MAY FEATURE SMALL PARTS AND SHARP TOOLS.

© Fort Worth Museum of Science and History, January 2014

DOUBLE WOW!

Drop by on these special days to explore

- January 1 Engineer a parade float in honor of the 125th Rose Parade all day - Doodler Studio
- January 2 Bridge building challenges at 1 pm and 2 pm - Inventor Studio
- January 5 National Bird Day. Collections Spotlight on ornithological specimens at noon and 2 pm - Innovation Gallery
- January 9 Happy Anniversary iPhone! Steve Jobs documentary at noon - Designer Studio
- January 10 Happy Birthday George Washington Carver! Peanut tasting at 3 pm - Innovation Gallery
- January 15 National Hat Day. Design a hat all day - Doodler Studio
- January 17 Happy Birthday Benjamin Franklin! Celebrate his birthday with static electricity activities at 1 pm and 3 pm - Designer Studio
- January 19 National Popcorn Day. Popcorn tasting at 3 pm - Innovation Gallery; "ZEA" film showing all day - Designer Studio
- January 22 National Polka Dot Day. Create with dots all day - Doodler Studio
- January 27 National Bubble Wrap Appreciation Day. Create with bubble wrap all day - Doodler Studio
- January 28 National Kazoo Day. Make a kazoo all day - Doodler Studio
- January 29 National Puzzle Day. Puzzles will be available all day throughout the studios.